

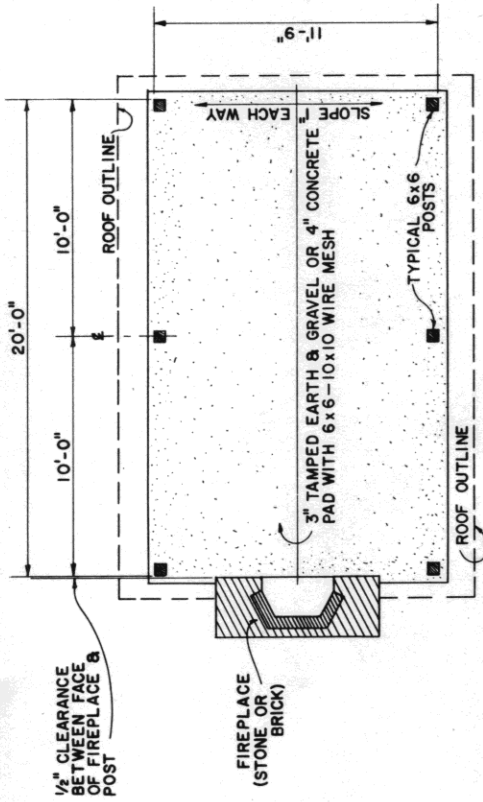
**BILL OF MATERIALS**

DESCRIPTION	QUANTITY	REMARKS
1x6 x 12'-0"	11 PC.	COLLAR BRACES
2x4 x 8'-0"	4 PC.	KNEE BRACES
2x6 x 8'-0"	22 PC.	TOP CHORDS
2x6 x 12'-0"	11 PC.	BOTTOM CHORDS
2x6 x 10'-0"	8 PC.	GIRTS
2x10 x 10'-0"	4 PC.	TOP PLATE
5/8" EXT. PLYWOOD	13 SHT.	SEE NOTE NO. 1
#18 ROOF SHEATHING	394 BM	*OPTIONAL
ASPHALT SHINGLES	4 SQ.	
#DRIP STRIP	80 LIN. FT.	*OPTIONAL
18" FLASHING STRIP	10 LIN. FT.	
15" LB. FELT	1 ROLL	
NAILS ROOFING	6 LBS.	1 1/4" GALV. LG. HEAD
10 D. & 20 D.	20 LBS. & 5 LB.	COMMON BRIGHT
LAG BOLTS	16	3/8" O x 5" LG. GALV.
#CONCRETE	3 1/2" YDS.	*OPTIONAL
6x6 x 12'-0"	6 PC.	PRESSURE TREATED

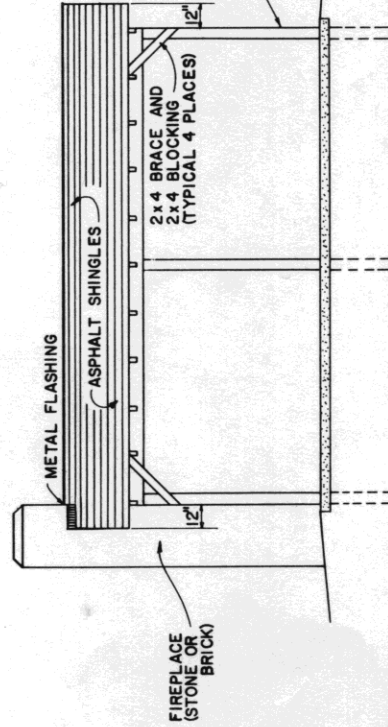
**GENERAL NOTES:**

- GUSSET PLATES ARE TO BE CUT FROM EXCESS ROOF SHEATHING. IF 1x8 SHEATHING IS USED THEN ONLY 2 SHEETS OF 1/2" EXTERIOR PLYWOOD MAY BE USED FOR GUSSET PLATES.
  - ALL END GRAIN LUMBER SHALL HAVE 1 COAT OF OIL BASE STAIN PRIOR TO ERECTION. ALL OTHER WOOD MEMBERS SHALL RECEIVE 2 COATS AFTER ERECTION.
- \*\* MATERIAL FOR FIREPLACE NOT INCLUDED, OTHER THAN FLASHING STRIP.

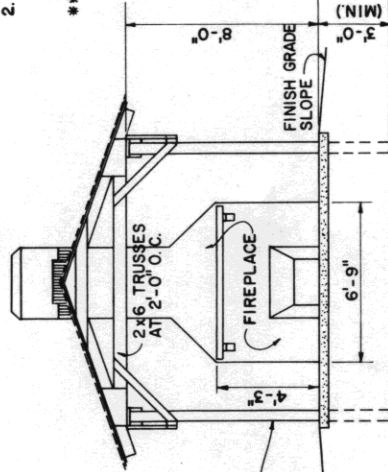
NOTE: BASED ON-CLEMSON UNIV. PLAN NO. 4525



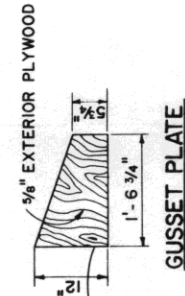
**PLAN**



**SIDE ELEVATION**



**END ELEVATION**



**GUSSET PLATE**

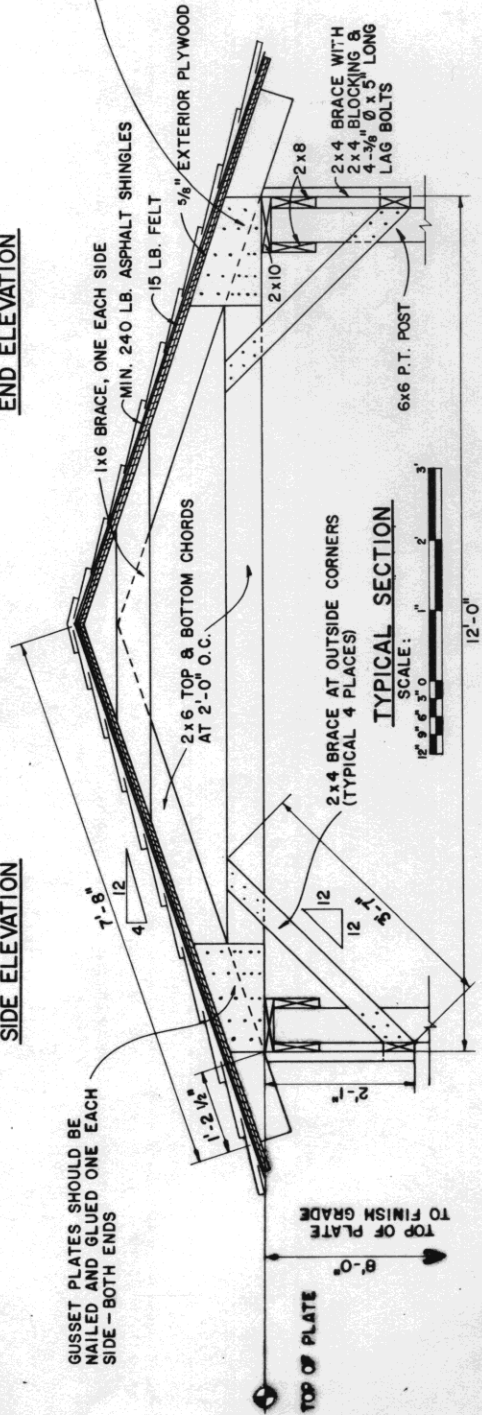
SCALE: UNLESS OTHERWISE NOTED

COOPERATIVE EXTENSION WORK IN AGRICULTURE AND HOME ECONOMICS

UNITED STATES DEPARTMENT OF AGRICULTURE COOPERATING AND

PICNIC SHELTER WITH FIREPLACE

S.C. 77 6295 SHEET 1 OF 1



**TYPICAL SECTION**

SCALE: 1" = 2' 3" 4"

12'-0"

TOP OF PLATE TO FINISH GRADE

GUSSET PLATES SHOULD BE NAILED AND GLUED ONE EACH SIDE - BOTH ENDS